



DAYA GROUP OF COMPANIES

CORPORATE PROFILE

Daya Group - our history



1977

Founded in Ampara, Delicia Hotel & Bakery was the the start of Daya Gamage's entrepreneurial career



1989

Daya Constructions is one of Sri Lanka's largest civil construction companies & honor to be awarded first local company



1992

Under the 200 Garment Factory Program, Daya Apparel opened with 500 machine operators in the rural and war-torn Eastern Province

Daya Group - our history



Sevenagala Sugar -2002

Privatised Sevanagale Sugar Industries and turned the loss-making business into billion turnover company



Bimpu Finance PLC - 2007

Initially established for sugar-cane workers, Bimpu Finance expanded to 46 branches and offers micro-credit to more than 150k women entrepreneurs



Daya Aviation

Daya Aviation is a premier charter service, operating a EC130T2 Airbus helicopter in Sri Lanka, capable of flying to any destination with a 7 seater capacity. Daya Aviation also provides outbound services, airline ticketing and visa services.

Daya Group - our history



Kinam Rice Mill

Company possesses its mill complex in Kekirawa, with a purchasing structure of paddy reaching to the door step of the rural farmers in the paddy cultivating districts. Above 300 MT Capacity per day.



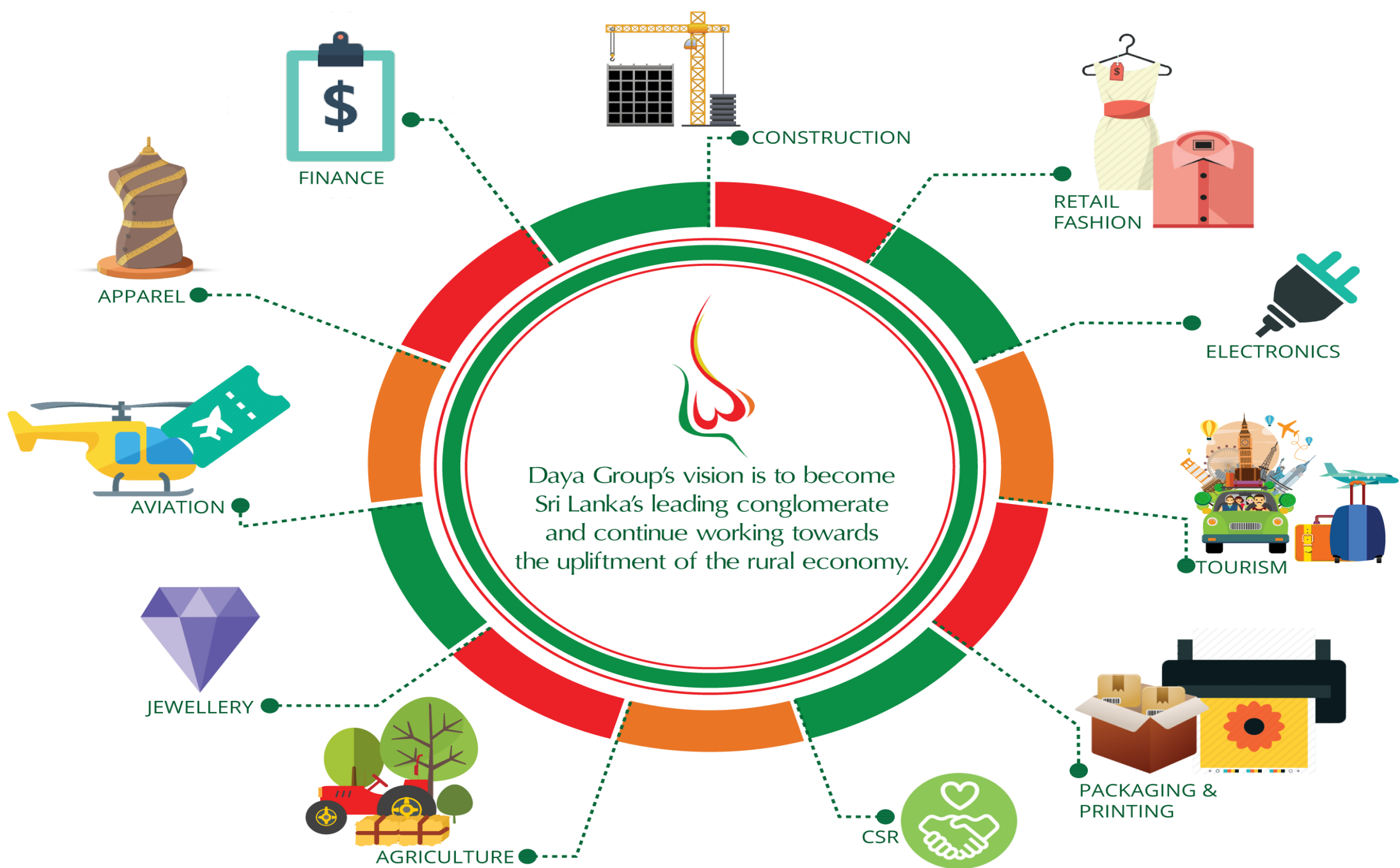
Batik Boutique

Batik Boutique specializes in all things batik! Our range of products include hand made batik satin



Deep Sleep

From bedsheets, pillows, pillowcases, bed linen, sleeping bags, table-ware, cushions and more (customized as needed), Deep Sleep has the capacity to support all linen needs, from hotel bedrooms to table-linen



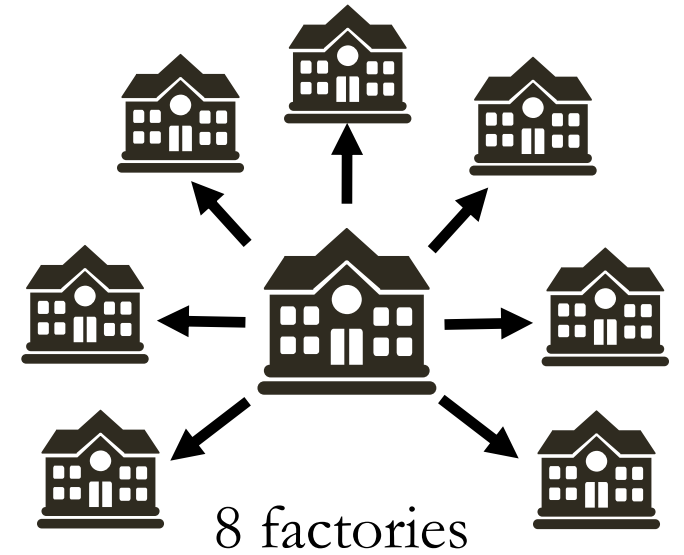
Location

- 8 factories across rural and underdeveloped Eastern Province
- 95% of workforce is female; alternative employment is agriculture
- Harmonious environment with all ethnic groups under one roof



Total Solution

- Over 20 years industry experience
- Specialising in woven bottoms
- Total solution under one roof



4560 m²
floor area



33 lines



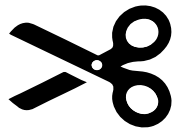
3000+ workforce



Hong Kong
sourcing office



Sample room



Automatic
cutting



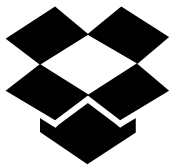
Embroidery
plant



Garment printing



Washing plant



In-house
packing

Manufacturing Capacity

- 14.5 million minutes per month (350,000 pieces)
- Capability includes cargo shorts, pants, chinos, flat front shorts, capris, skirts and 5 pocket jeans in twill, canvas, denim, yarn dye and more

Sample Room

- Lectra System
- Sample Capacity of 20 pieces a day



Washing Plant

- Dry Processing including curing ovens, PP spray, grinding, ripping
- Wet Processing including:
 - garment dying (reactive, pigment, over dyeing)
 - enzyme wash
 - stone wash
 - special washes (Durable Water Repellency, anti-bacterial, mosquito repellency)
- Washing Capacity of 20,000 pieces a day

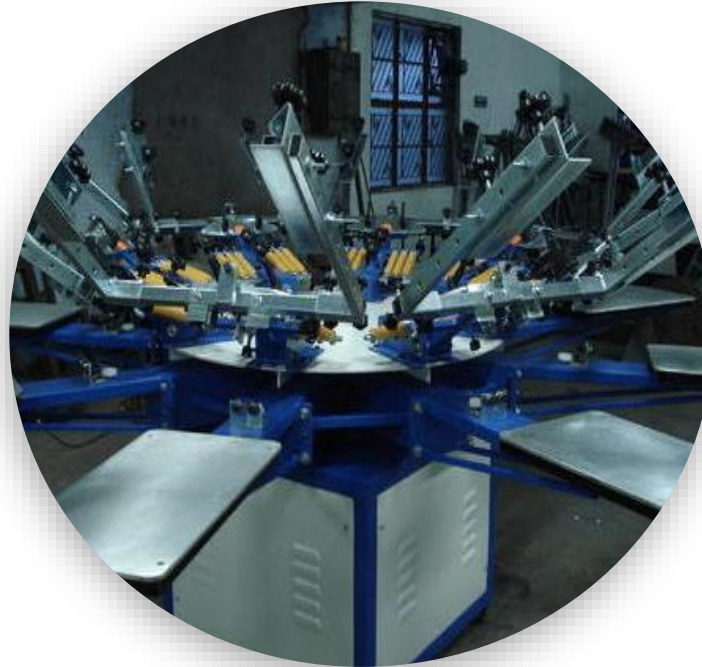


Capabilities



In-house Embroidery Plant

2x20 headers and 1x12 heads, operating 24/7



Garment Printing

Capable of up to 6 colours on semi-automation



Automated CAD & Laying & Cutting

Fully automated process

Capabilities



Green Initiatives

Bio Mass Boiler
Waster water neutralisation
Solar Panels



Finishing and Packing Units

4 Integrated Units from
quality to packing for final
inspection



Training

Several training and skills
development initiatives

Compliance

- WRAP Gold certificate
- GSV (Global Security Verification)
- Green Rating Sedex approval
- C-TPAT approval
- Oeko-Tex certified chemicals used in the washing process



Buyer Portfolio



TARGET

DKNY



ROCA & WEAR



Gloria Vanderbilt

MARKS &
SPENCER



KOHLS

next



AMERICAN EAGLE
OUTFITTERS

GUESS



TESCO

極度乾燥(しなさい)
Superdry.

jcpenny

George.

OLYMPUS CONSTRUCTION

Olympus Construction (Pvt) Ltd has successfully undertaken and carried out Government, Semi Government and Private sector projects of a very high profile in Building Construction, Road & Bridge Construction and Water Supply. The Construction of the

Kurunegala – Katugasthota Road, Nurses Training School in Ampara, New Operation Theater Complex at General Hospital Badulla, Eden Garden Housing Projects at Thalawathugoda are few of the projects undertaken by the company that bear testimony to this fact. A scrutiny of the list of projects completed, and those presently in progress, amply demonstrate the magnitude and diversity of the works undertaken by the company. It is pertinent to mention here that we were the First Local Construction Company to win a Major Road Project funded by the World Bank.

Olympus has obtained the highest ICTAD grading of C-1 for Highway Constructions, C-1 for Building Constructions, EM-1 for Mechanical ventilation And Air conditioning and EM-1 for Electrical installation (EELV) Low Voltage. We have a team of qualified professional staff and a range of Plant, Machinery & Equipment and a fleet of Modern Vehicles. Ancillary facilities such as Metal Quarries, Crusher Plants, Asphalt Plants and other necessary resources are at our disposal to undertake any Major Project in the Buildings and any other Civil Engineering discipline.



OLYMPUS CONSTRUCTION – PROJECTS

MULTI-PURPOSE CENTER -HAPUTALE



Utility : Office Complex
Client : URBAN COUNCIL Haputale
Location : Haputale
Completion : December 2012

Contract Value : SLR 52 Million



This is a four storied Multipurpose Building for the Haputale Urban Council. The building is a re-inforced concrete structure well ventilated with anodized aluminum Windows, and Tiled floors. The roofing is asbestos sheets supported by Steel Trusses. The Facility is to be used as a Shopping Complex, Banking Facilities, Medical Centre, a Restaurant and Living Quarters on the Ground and First Floors.

Total area is 1370 m2.



MULTI-PURPOSE CENTER - NUWARA ELIYA



Utility : Office Complex
Client : National Water Supply & Drainage Board

Location : Nuwara Eliya
Completion : March 2012

Contract Value : SLR 103 Million



This is a reinforced concrete building on strip foundation. The four storied building has a flat roof allowing provision for an additional floor. Work includes Air Conditioning, Supply & Installation of Lift, Fire Protection System, Aluminum work, Sanitary & other services. Total area is 2200 m2.per floor

Road Projects



KAHAWA BATAPOLA ROAD PROJECT

Type : Road Rehabilitation
Client : Road Development Authority
Location : Southern Province
Completion : 2009 March
Contract Value : SLR 126 Million

This was an improvement to the Kahawa-Batapola Road (From 3+000 km to 8+700 km)



KURUNEGALA - KATUGASTOTA ROAD PROJECT

Type : Road Rehabilitation
Client : Road Development Authority
Location : Central & Wayamba Province

Completion : July 2008
Contract Value : SLR 1461 Million

This is a class 'A' type road & the Total Length is 37km. There are 06 nos of Bridges & 189 nos of Culverts.

OLYMPUS CONSTRUCTION – PROJECTS

Road Projects



KAHAWA BATAPOLA ROAD PROJECT

Type : Road Rehabilitation
Client : Road Development Authority
Location : Southern Province
Completion : 2009 March
Contract Value : SLR 126 Million

This was an improvement to the Kahawa-Batapola Road (From 3+000 km to 8+700 km)



KURUNEGALA - KATUGASTOTA ROAD PROJECT

Type : Road Rehabilitation
Client : Road Development Authority
Location : Central & Wayamba Province

Completion : July 2008
Contract Value : SLR 1461 Million

This is a class 'A' type road & the Total Length is 37km. There are 06 nos of Bridges & 189 nos of Culverts.



PROJECTS - Courts Complex & Judges Residences



Client : Secretary, Ministry of Justice
Location : Jaffna
Completion: 20th June 2013
Contract Value : SLR 175 Million



The Building complex consists of Two Court Houses at the Ground Floor and Second Floor; twin Quarters for Judges and a Single Storied House for the State Counselor. Court house comprises of two Chambers, Office Areas, Post Office, Bank, Police Post, Canteen and toilets (including facilities for the public toilets and the disabled). Four Court Yards were provided to improve the ventilation and provide natural lighting. Central Telephone system facilitates all internal and external was provided. Lighting protection system was installed as this is the highest building in the vicinity. Residence for State Counselor was also provided. Total area is 4385 m2.

OFFICE BUILDING FOR REGIONAL CENTRE (WESTERN NORTH)



Utility : Office Complex
Client : National Water Supply &

Drainage Board
Location : Kadawatha
Completion : December 2012

Contract Value : SLR 146 Million

This is a reinforced concrete building on strip foundation. The four storied building has a flat roof allowing provision for an additional floor. Work includes Air Conditioning, Supply & Installation of Lift, Fire Protection System, Aluminum work, Sanitary & other services. Total area is 2200 m2.per floor

BIMPUTH FINANCE PLC



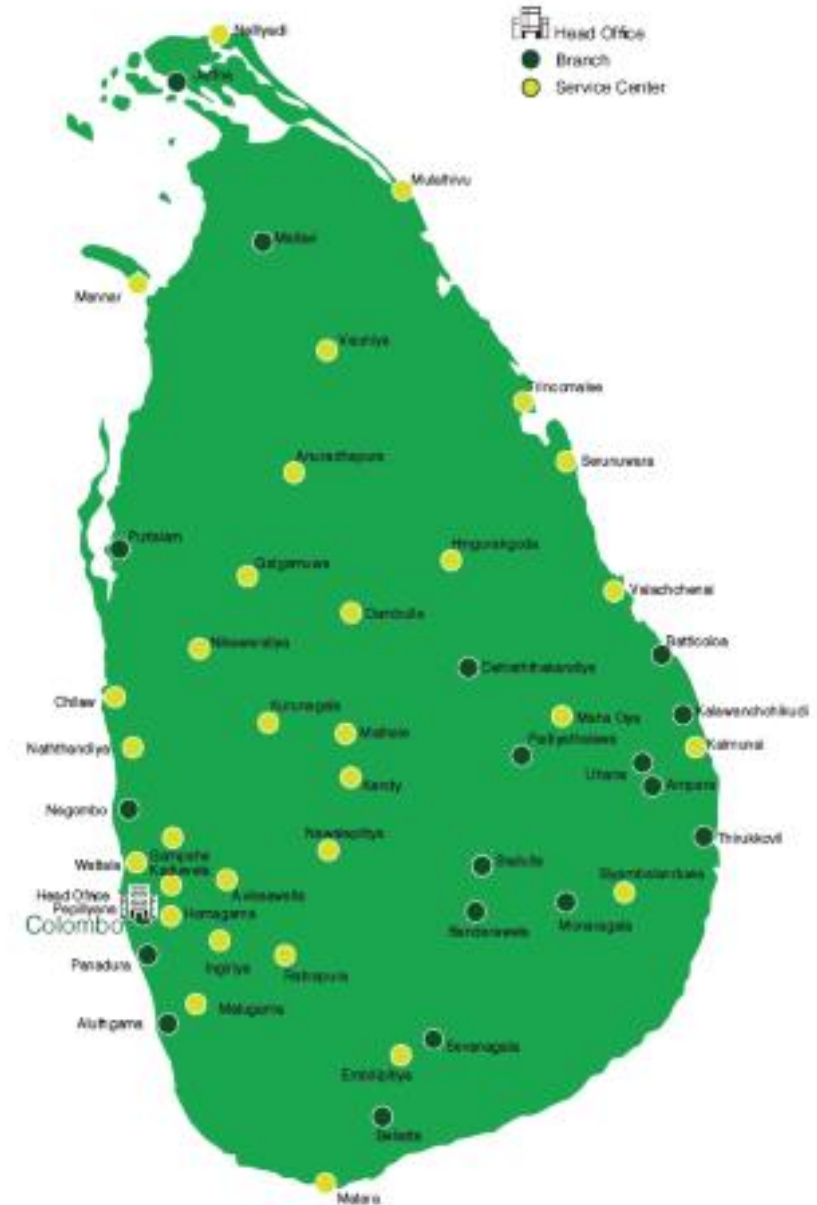
Bimputh Finance Plc. was incorporated in July 2007, with an objective to engage in the business of providing financial services to develop the rural economy and support business activities of the Group.

The Central Bank of Sri Lanka approved Bimputh Finance as an authorised finance company in October 2008. It is currently the only publically listed subsidiary of Daya Group.

BIMPUTH FINANCE PLC

BRANCH NETWORK

There are currently 46 branches and 28 service centers in operation presently targeting Micro Finance services specially to the rural



KINAM RICE MILL

Extending the helping hand of a truly indigenous company, towards the local farmers of the country, Kinam Rice's prime objective is to provide the real value to the paddy farmers for their hard earned yield. Major operation of the Kinam Rice and Allied Products (Private) Limited is contributing fulfilling the rice demand of the country and adding value to the rice products, thereby creating the maximum gain for the farming community.



Batik Boutique

BatikBoutique specialises
in all things batik!
Our range of products
include hand made
batik satin



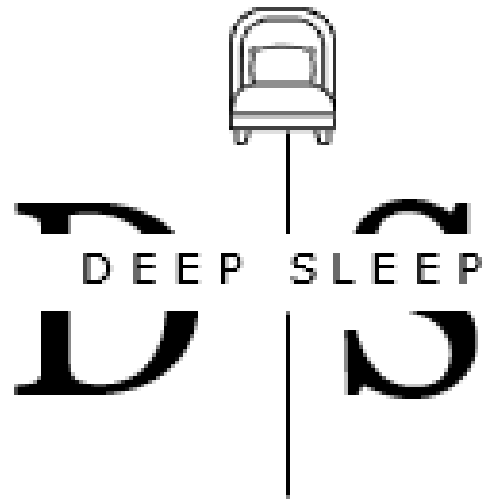
BATIK BOUTIQUE



Daya Aviation (Pvt) Ltd.



To cut down the transport time, we offer our buyers the comfort of our own helicopter to visit the production facilities.
Within 45 minutes of flying time, you can travel from Ampara to Colombo.



LUXURY LINEN AND BEYOND



OUR PRODUCTS

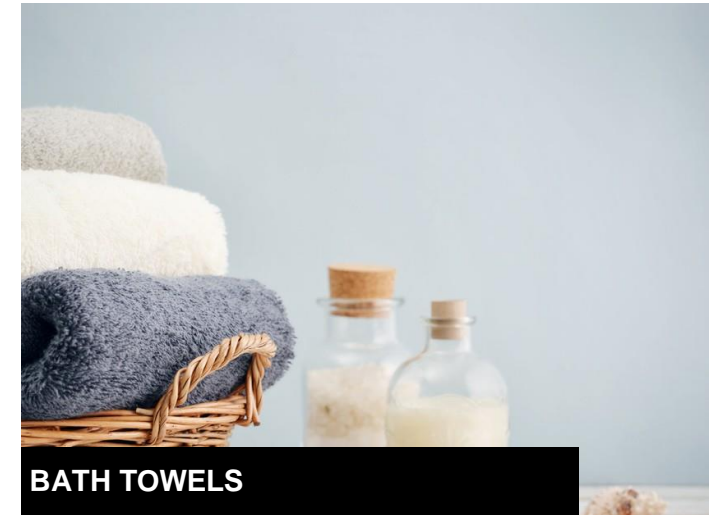
From bedsheets, pillows, pillowcases, bed linen, sleeping bags, table-ware, cushions and more (customised as needed), Deep Sleep has the capacity to support all linen needs, from hotel bedrooms to table-linen.



BED SHEETS + QUILTS + COVERS



PILLOWS + PILLOW CASES



BATH TOWELS

Varna Limited

Packaging the Future

Incorporated over five decades ago in 1961, Varna Limited is the very first flexible packaging company to be established in Sri Lanka. The company was founded by Sri Lankan entrepreneur and press tycoon Esmond Wickremesinghe, the Chairman of the Lake House, home to the Associated Newspapers of Ceylon, the country's oldest publication company.

Varna commenced operations by introducing Rotogravure printing of wrappers for the local confectionery and biscuit industry for the first time in Sri Lanka. Toffee manufacturing, in particular, was a booming industry at the time, but manufacturers were dependent on imported cellophane wrappers for the conventional twist wrapping of toffees. Varna ventured into the picture, competing as a low-cost, superior quality alternative to imported items that were entering into the country at that time



Daya Group Future Projects

We are Keen to be the
best Green Energy
Company in Sri Lanka



Electric
vehicles



Electric Vehicle
Charging Stations



Solar Panels



Contact Info



Daya Group of Companies

25/1 Sarasavi ,Mawatha Off S De S Jayasinghe,
Mawatha, Kalubovila
Sri Lanka

Tel : +94 11 7515 380

Fax : +94 11 4308 661

Email : info@daya-group.com